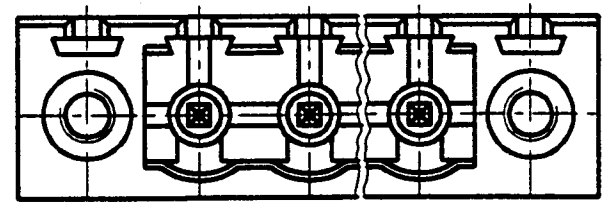
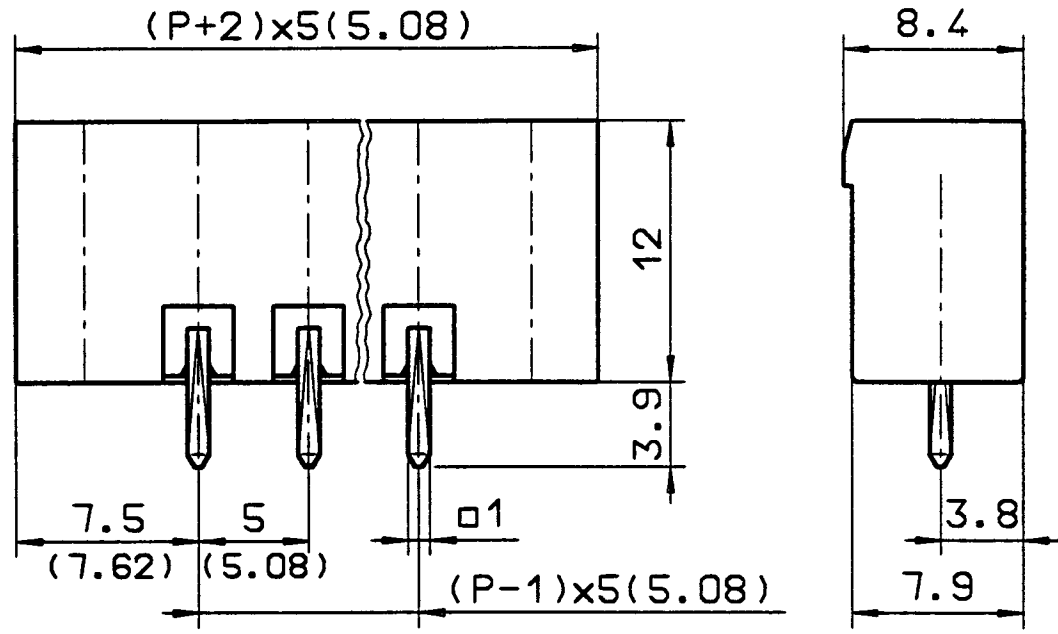


**Ratings:**  
 Current 15A  
 Voltage 300 VB  
 Test Voltage 2.0 kV

**Dimensions:**  
 Spacing 5.0mm (5.08mm)  
 PCB Hole Diameter 1.4mm

**Materials:**  
 Insulating Material PA  
 Flammability UL94V-0  
 Temperature -30°C/+105°C  
 Contact Pin Cu  
 Color Green



Part Number  
**EDSTL(Z)956/ \* \***  
 \* - NUMBER OF POSITIONS

Units  
 mm

Drawing

Reviewed

Approved

Date  
 1/23/98

Sheet 1 of 1

Rev. A